

**PLEIADES**  
RESIDENCE  
by Prime Kapital

URBAN 2 CAMERE

DS1

- ☑ Nr. camere: 2

---

- ☑ Nr. bai: 1

---

- ☑ Etaj: 1 - 10

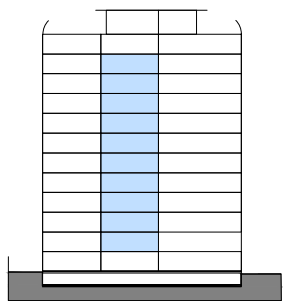
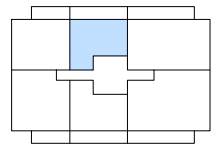
---

- ☑ Suprafata construita locuinta = 55.59 m<sup>2</sup>

---

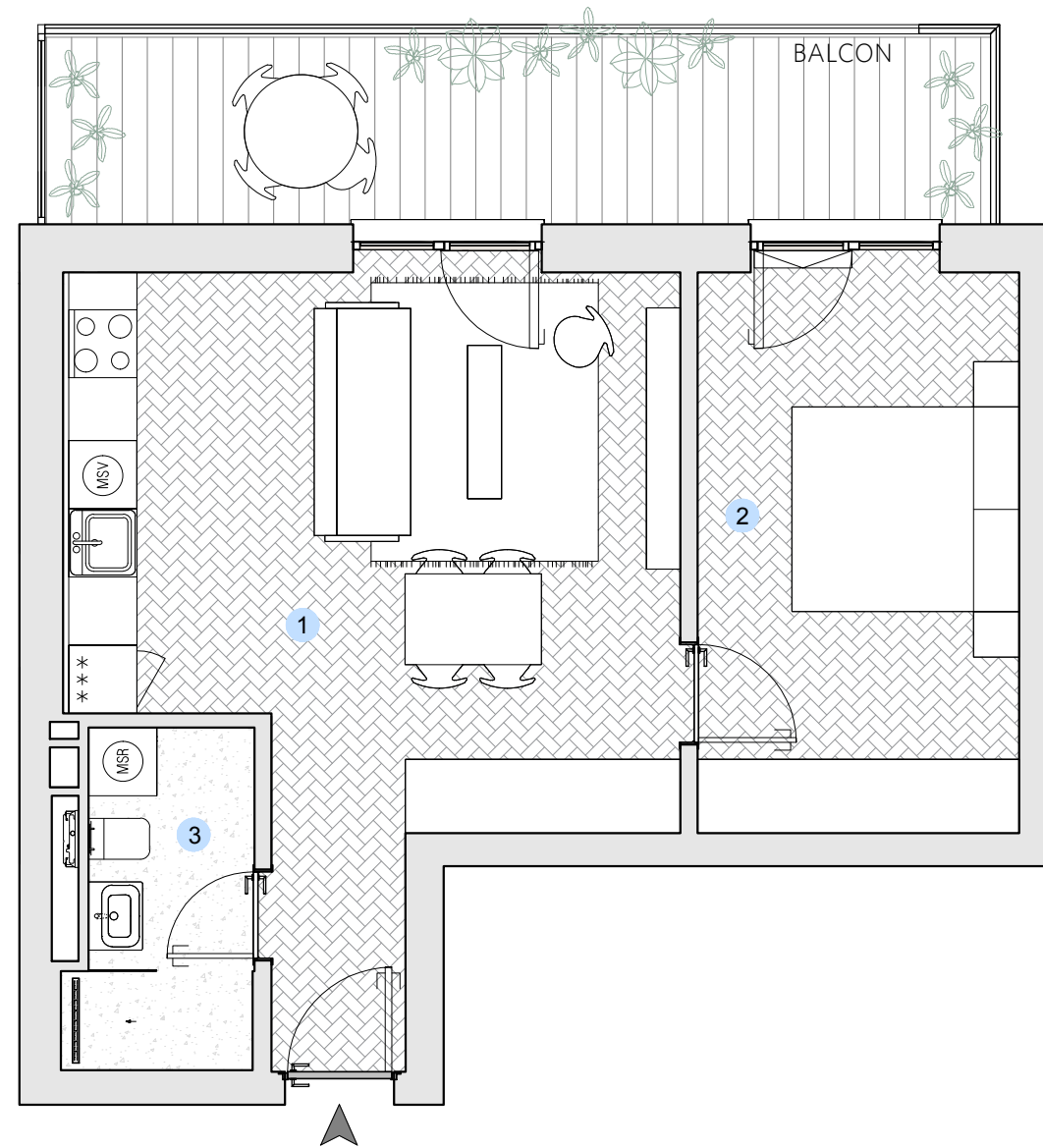
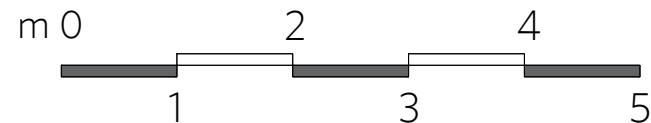
- ☑ Suprafata construita totala = 71.04 m<sup>2</sup>

---

**Prime Kapital**

**adn**  
biro de arhitectură



Suprafete utile:	
1. living+dining+bucatarie	27.70 m <sup>2</sup>
2. dormitor	14.30 m <sup>2</sup>
3. baie	4.61 m <sup>2</sup>
.....	
Total suprafete utile	46.61 m <sup>2</sup>
<b>Balcon</b>	<b>13.73 m<sup>2</sup></b>